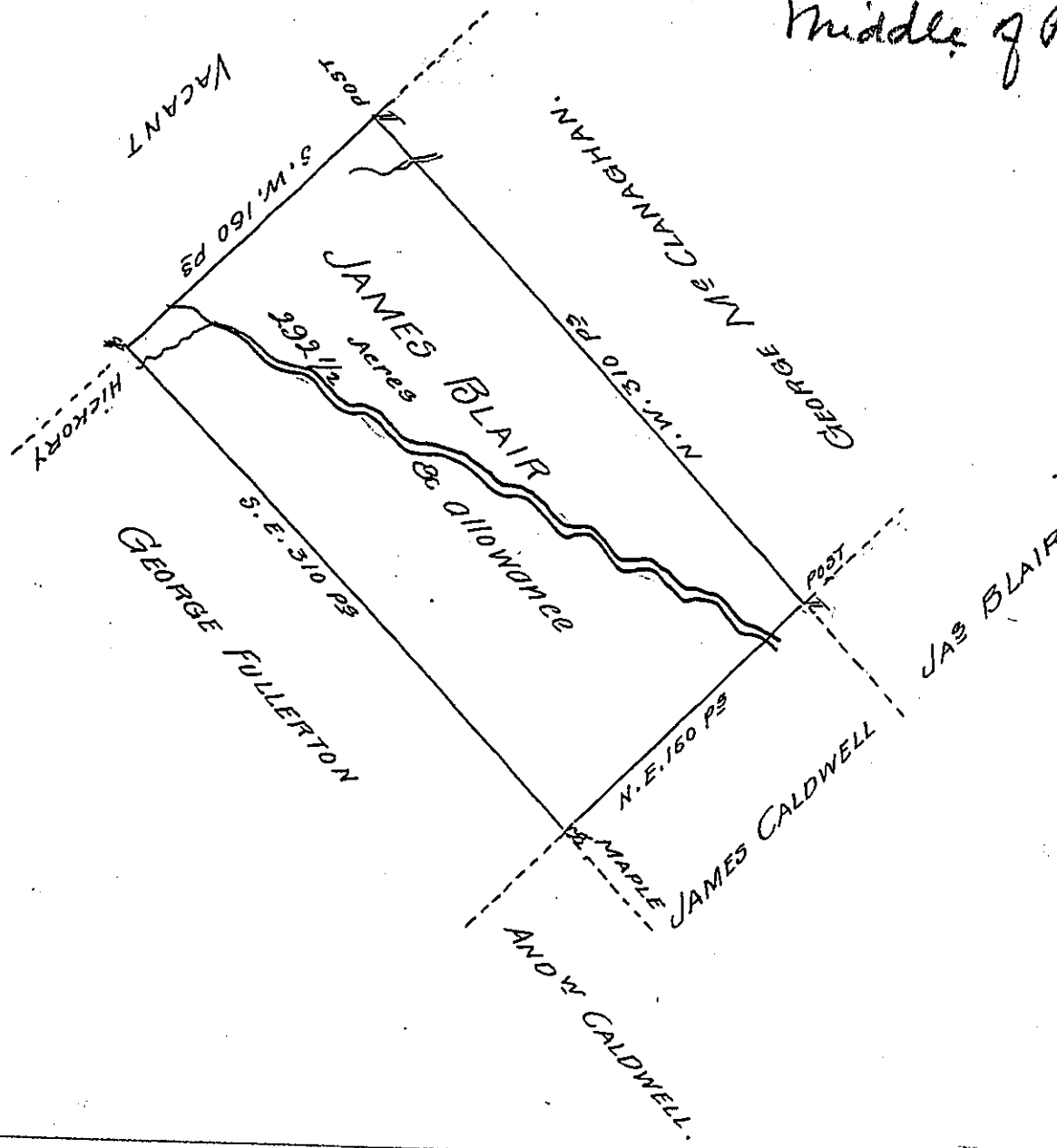


Patent - P-1-389-99

Middle of Page X



A Draught of a Tract of Land called — situate on some of the head Branches of Lahawanock and Tunkhannock Creeks adjoining Lands surveyed for George Fullerton and others in the County of Northumberland containing Two hundred and ninety two Acres and 1/2 Acre besides the usual allowance of 6 P. Cent for Roads &c. Surveyed for James Blair the 5th Day of May 1775 In pursuance of a Warrant dated the 20th Day of February 1775.

Chas Stewart, Depy Sur^r.

To John Lukens, Esq^r

Survey^r Gen^l

IN TESTIMONY that the above is a copy of the original remaining on file in the Department of Internal Affairs of Pennsylvania, made conformably to an Act of Assembly approved the 16th day of February, 1833, I have hereunto set my Hand and caused the Seal of said Department to be affixed at Harrisburg, this fourteenth day of November 1905.

Loac J Brown
Secretary of Internal Affairs.